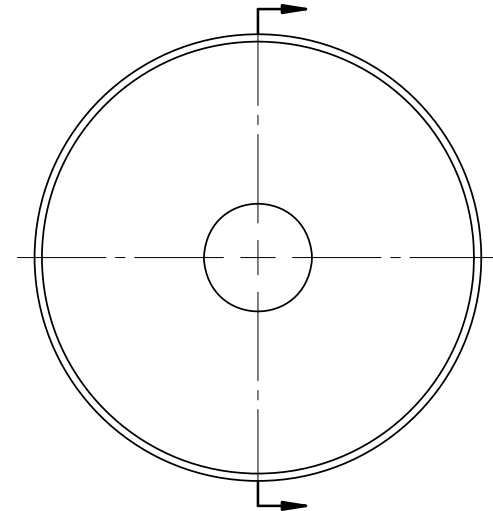
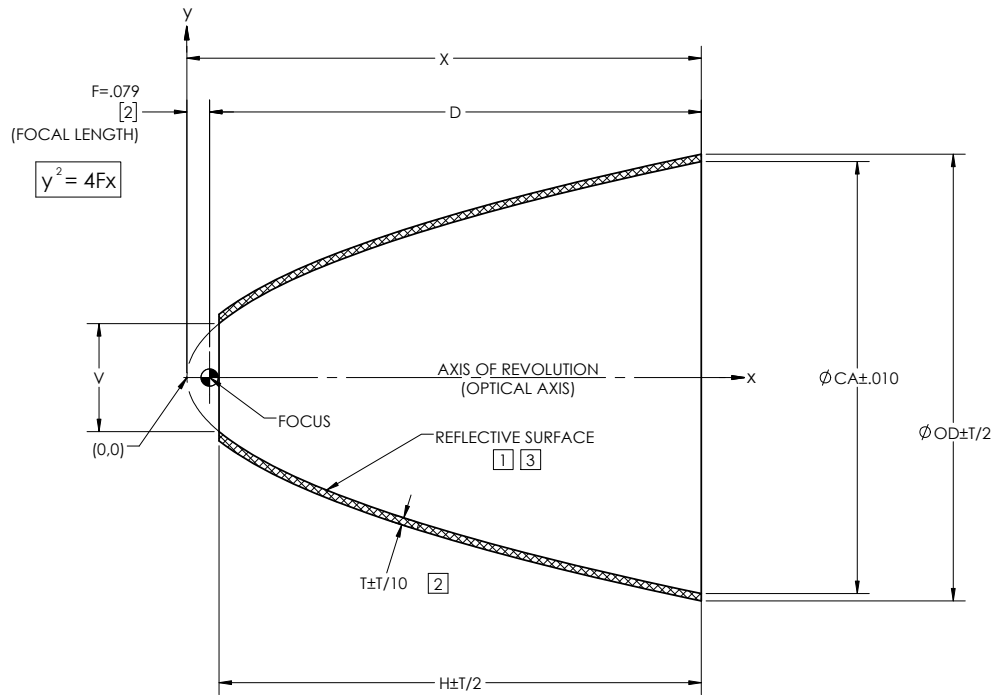


REVISIONS			
REV	DESCRIPTION	DATE	APPROVED
Ø	INITIAL DRAWING RELEASE	08/08/07	SJM
A	UPDATED DRAWING FORMAT	07/25/17	JPH

NOTES: UNLESS OTHERWISE SPECIFIED

- 1 ELECTROFORM REFLECTOR FROM MASTER TOOL WITH SPECULAR SURFACE QUALITY OF 80-50 SCRATCH-DIG PER MIL-PRF-13830B.
- 2 NOMINAL THICKNESS (T) MAY VARY ± T/4 WITHIN .25 OF EDGES.
- 3 REFLECTIVE SURFACE COATING TO BE SEPARATELY SPECIFIED.



DASH NO.	CA	V	OD	T	X	D	H	P2
P2	1.500	0.375	1.551	0.025	1.786	1.707	1.674	P2
P2-0100	1.500	1.000	1.551	0.025	1.786	1.707	0.992	P2-0100
P2-0200	1.500	0.375	1.551	0.025	1.786	1.707	1.674	P2-0200
P2-0300	1.091	0.260	1.143	0.025	0.945	0.866	0.891	P2-0300

NOTE: THE "P2" DASH NO. IS THE THEORETICALLY LARGEST REFLECTOR THAT CAN BE FORMED ON EXISTING MASTER TOOLING.

UNLESS OTHERWISE SPECIFIED DIMENSIONS ARE IN INCHES [mm] GD&T PER ASME Y14.5-2009 DO NOT SCALE DRAWING		CONTRACT NO. 07-P2		42310 WINCHESTER RD. TEMECULA, CA 92590 WWW.OPTIFORMS.COM	
DRAWN JIW	DATE 07/25/17	CHECKED RRS	DATE 07/25/17	REFLECTOR, PARABOLIC .079" / 2mm FL	
ENGR	DATE	MATERIAL	DATE		
FRACTIONS ± 1/16 DECIMALS ± .02 ANGLES ± 1/2° SURFACE ROUGHNESS √ 015 MAX. DEBURR SHARP EDGES & HOLE RING .015 MAX. CHAMFER THREADS .01 PAST ROOT DIAMETER		ELECTROFORMED NICKEL - LSSN TYPE 1		SIZE C	CAGE CODE 0Y1Y4
NEXT ASSY		USED ON		SCALE 3:1	DWG. NO. P2
APPLICATION		THIRD ANGLE PROJECTION		FRSH	REV A
		SEE NOTES 1,3		WT. (REF) 0.047 lbs.	SHEET 1 OF 1